

An underwater photograph of several salmon swimming in a stream. The water is clear and blue, with sunlight filtering through from above, creating a shimmering effect. The salmon are in various stages of movement, with one large salmon in the foreground being the most prominent. The background shows more salmon swimming away.

# *Rogue-South Coast Multi-Species Conservation and Management Plan*

## Stakeholder Meetings #1

February 26, 2020 – Gold Beach, South Coast Stratum

February 27, 2020 – Central Point, Rogue Stratum



**Thank You!**

# *Agency Mission*

*Protect and  
enhance  
Oregon's fish  
and wildlife and  
their habitats  
for use and  
enjoyment by  
present and  
future  
generations*





# *Native Fish Conservation Policy*

*Hatchery Fish Management  
Policy*

*Fish Health Policy*

# *Native Fish Conservation Policy*

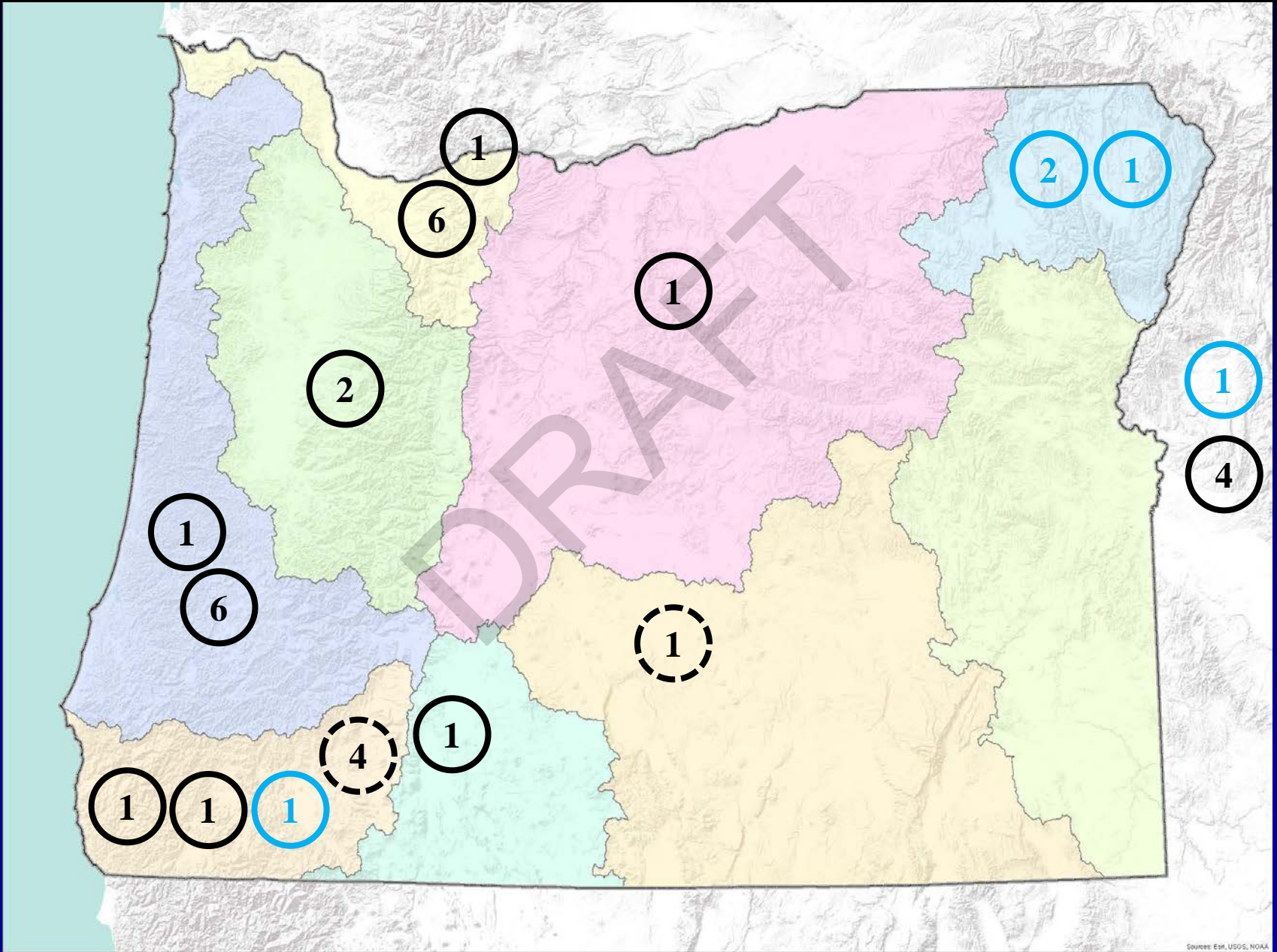
## *Goals*

- **Prevent serious depletion of native species ... so that natural production of native fish is sustainable.**
- **Maintain and restore naturally produced native fish species ... to provide substantial ecological, economic and cultural benefits...**
- **Foster and sustain opportunities for sport, commercial and tribal fishers consistent with conservation...**
- *Naturally-produced fish foundational for conservation and fishing opportunity*

# *Native Fish Conservation Policy Plans*

- **Identify SMUs and populations**
- **Current status**
- **Desired status**
- **Limiting factors**
- **Management strategies**
- ***Adaptive management:***
  - **monitoring, evaluation, research**
  - **strategy modification process**
  - **measurable criteria**
- **Reporting**
- **Impacts to other native fish**

# Conservation and Recovery Plans

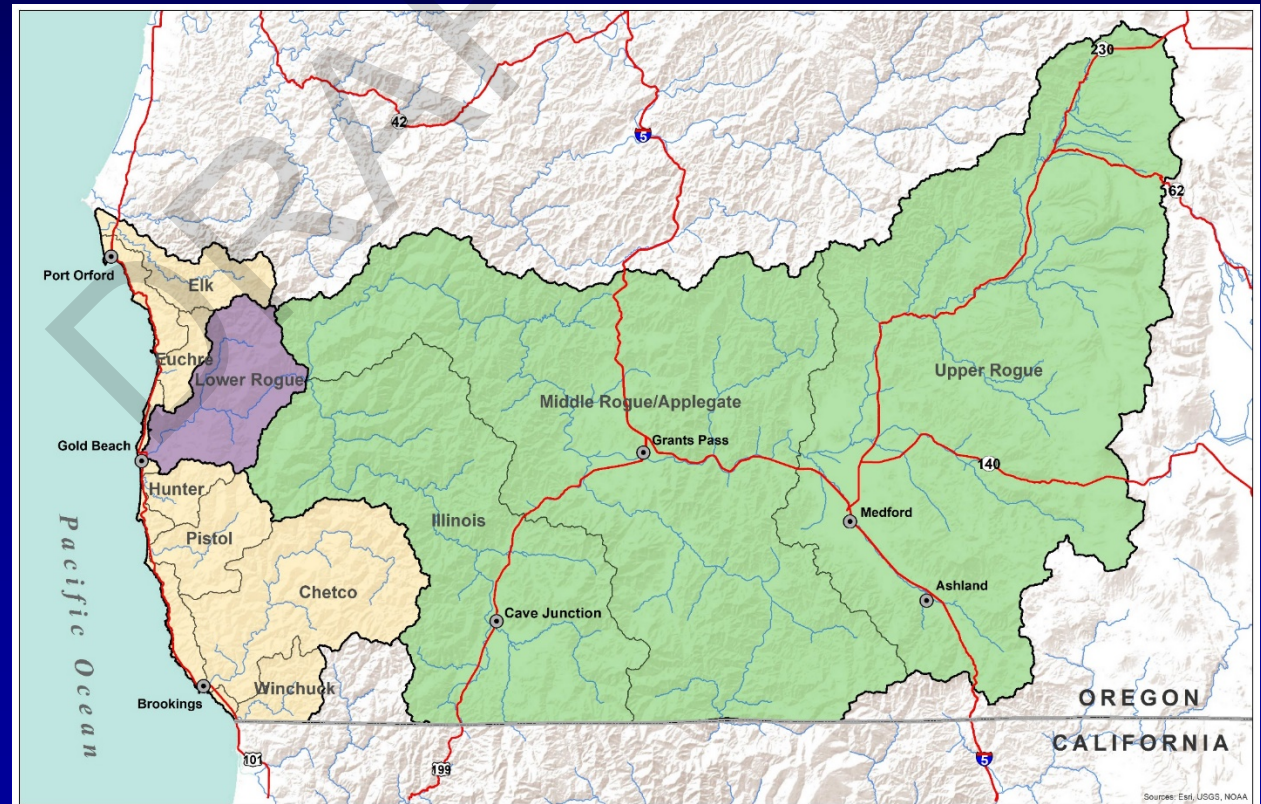


# *Stakeholder Team Objectives and Operating Assumptions*



# Objectives

- Four SMUs
- Cape Blanco south
- Two stratum teams
- Resolve conflict
- Short timeframe



# *Objectives*

- **Recommend fishing-related strategies and actions within management categories**
  - **Fishing**
  - **Hatcheries**
  - **Other species**
  - **Facilities**
  - **Outreach**
  - *Research and monitoring*
  - *Habitat*
- **Conservation and utilization**



# *Operating Assumptions*

- **No new, immediate conservation or fishing crisis**
- **Environmental conditions are changing, and management must adapt appropriately**
- **“Portfolio” approach: management strategies can/should vary**
  - **specify emphasis areas: wild and hatchery**
- **Fishing and hatcheries may create conservation risk, but are important for use, enjoyment, and opportunities**
- **Harvest can be managed sustainably**
- **There are never enough data; when faced with uncertainty, precautionary strategies are scaled to the conservation risk**
- **New programs require funding and support**
- **Habitat is key limiting factor, but not the focus of this process**
- **Desired status is to improve all populations**
- **Adaptive management expected**

# Questions?



# Plan Development: Process and Timeline

		2020											
	2019	Jan	Feb	Mar	Apr	May	Jun	Jul	Aug	Sep	Oct	Nov	Dec
ODFW Analysts	Assessments												
Stakeholders			[Orange Bar]				[Purple Box: First Draft and Review]						
Habitat Work Group					[Yellow Bar]		[Purple Box: First Draft and Review]						
Tribes					[Green Bar]		[Purple Box: First Draft and Review]						
NMFS					[Blue Bar]		[Purple Box: First Draft and Review]						
Science									[Green Box: Public/Science Draft and Review]				
Public									[Green Box: Public/Science Draft and Review]				
Public/Commission											[Blue Box: OFWC Draft 1, 2 --> Final]		



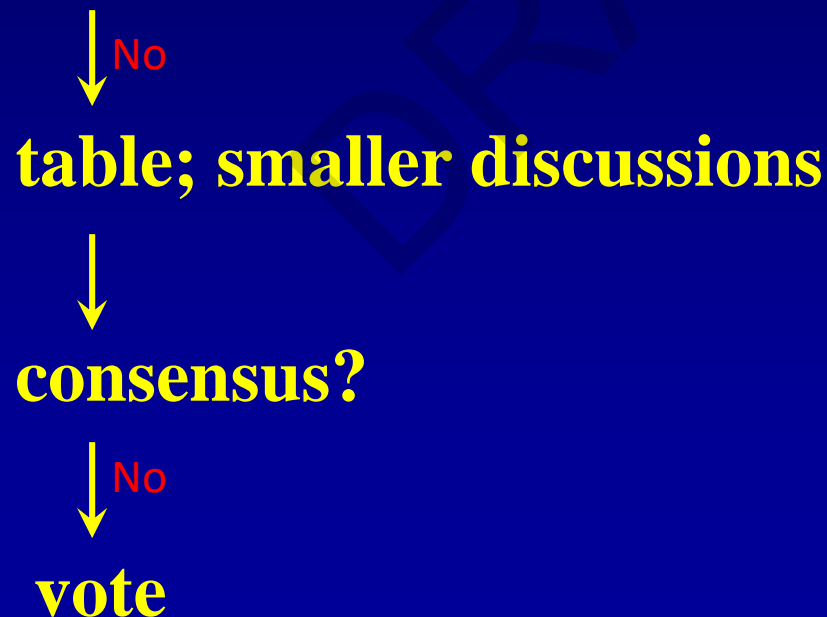
# *Plan Development: Stakeholder Charter*

- **Purpose and Scope**
- **Roles and Responsibilities**
- **Procedures and Products**
- **Code of Conduct**

*Respect and collaboration → consensus*

# *Plan Development: Stakeholder Process*

- **ODFW brings proposals (meetings 2&3)**
- **Stakeholders systematically discuss, modify**
- **Consensus?**



A group of salmon swimming in dark water. The fish are illuminated from above, creating a shimmering effect on their scales. The water is dark and slightly murky, with some light reflecting off the surface. The fish are in various positions, some swimming towards the camera and others away from it. The overall scene is dynamic and captures the natural behavior of the fish.

Questions ?